

TIER Flexible Adhesive



DIRECTIONS:

Preparation

All substrates must be suitable to receive tiling as per current good working practices. All substrates should be clean and thoroughly sound; they should be free from standing water, oils, grease, dust, loose particles or any other contaminants which may interfere with adhesion. The following are some guidelines for typical substrates. It is recommended that current best practice, e.g. current TTA or COP guidelines are always followed. For further information or for situations which are not covered below, consult our website or contact our Technical Department: 028 40622444 or www.trenao.com

TIER® Flexible Adhesive is a specially formulated, polymer modified, deformable, standard setting, cement based adhesive. It is suitable for beds of 3 – 6mm, interior, exterior, floor and wall applications. While it is mainly used up to 6 mm bed depth it is suitable for use up to 12mm in isolated areas. It is suitable for areas which are totally immersed in water e.g. swimming pools and wet rooms. TIER® Flexible Adhesive is for fixing TIER® Panel System and mosaics to a variety of substrates including those subject to minor movement/vibration including: under floor heating and properly prepared timber.

- **Suitable for: TIER® Panel System**
- **Suitable for: Thin and Thick Bed**
- **Water Resistant**
- **Grout after 2 hours**
- **BS EN 5980 Type 1 Class AA**
- **Grey**



HANDLING PRECAUTION Adhesive products are generally safe provided they are used as instructed and that certain precautions normally taken when handling chemicals are observed e.g., do not allow any material to come into contact with foodstuffs. Avoid contact with skin. Do not swallow. Always read the safety information on the pack and the Safety Data Sheet before use.

IMPORTANT NOTE The information given in this data sheet is based on both current development work and many years' field experience. Whilst every effort is made to ensure that the information is reliable we cannot accept responsibility for any work carried out with our materials where we have no control over methods of application, site conditions etc.

For further information consult our Technical Department
TEL: 028 40622444 Online: www.trenao.com
TDS: TIER Flexible Adhesive



Concrete or Sand/Cement Screed Generally requires no further preparation. Care should be taken to ensure no residue mould oil or curing membrane is present on the surface. If the surface is particularly porous prime as detailed below. New concrete should be at least 4-6 weeks old and fully cured and dry. New screed should be at least 21 days old and thoroughly dry.

Concrete and Sand/Cement Render Should require no further preparation. If particularly porous, prime as below. New concrete should be at least 28 days old and fully cured and dry. New screed/render should be at least 14 days old and thoroughly dry. There should be no standing water.

TIER® Building Board Requires no additional priming before fixing. The Building Board must be secured according to the guidelines as the weights of the Panels are approximately 75kg per m2 so therefore we recommend fixings centers of 40cm

Priming

An Acrylic Primer should be used to prime surfaces when required. On porous substrates, dilute 1:1 with clean water and allow drying before applying adhesive. On impervious substrates, apply primer neat and apply adhesive when primer is still tacky.

Mixing

The adhesive should be added to clean water and mixed with a suitable forced action mixer or slow speed drill and paddle until a slump free mortar is produced approx. 5 L water / 20 kg adhesive. The mixed adhesive is usable for up to 5 hours depending on site temperature and conditions. Do not add extra water as this will cause a loss in performance.

Application

The mixed adhesive should be applied to dry areas on walls using a notched trowel and applied by solid bed on wet areas on walls, Panels should be placed with a firm twisting action before the adhesive has skinned over, i.e. within the open time.

Restrictions

'Dot and Dab' is not a recommended method of application.

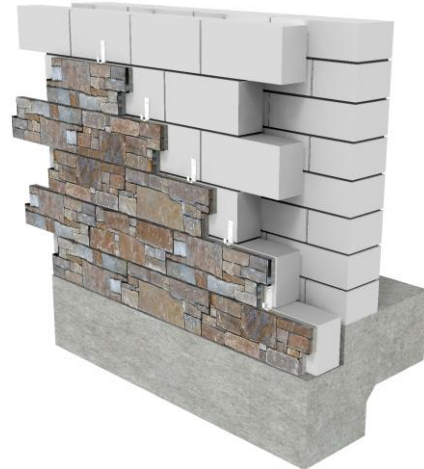
Cement based products will take longer to harden and set at lower temperatures and should not be used below 5°C.

Do not traffic floor areas until the adhesive has set.

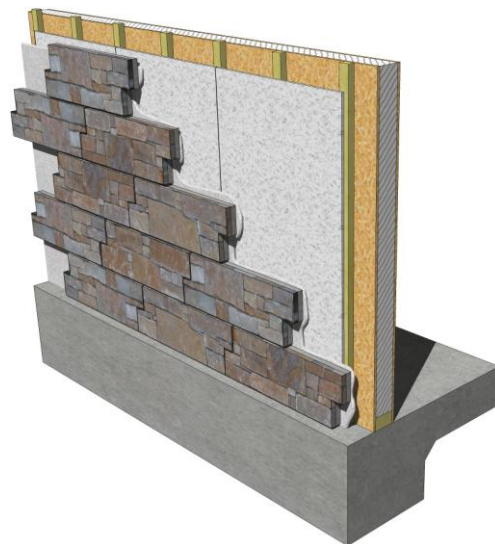
All fixings or tiling should be carried to current best

practice including British Standards and TTA Guidance documents.

Traditional Build Method



Timber Frame Method



HANDLING PRECAUTION Adhesive products are generally safe provided they are used as instructed and that certain precautions normally taken when handling chemicals are observed e.g., do not allow any material to come into contact with foodstuffs. Avoid contact with skin. Do not swallow. Always read the safety information on the pack and the Safety Data Sheet before use.

IMPORTANT NOTE The information given in this data sheet is based on both current development work and many years' field experience. Whilst every effort is made to ensure that the information is reliable we cannot accept responsibility for any work carried out with our materials where we have no control over methods of application, site conditions etc.

For further information consult our Technical Department
TEL: 028 40622444 Online: www.trenao.com
TDS: TIER Flexible Adhesive



Technical Information

PRODUCT INFORMATION	
FORM	Free – flowing Powder
COLOUR(S)	Grey
HAZARD INFORMATION	IRRITANT – Consult Safety Datasheet before use
CLEANING	Clean tools, equipment etc. using warm water. Mechanical means are necessary when the product has set.
PACKAGING	20 kg multiwall, sealed paper sacks
STORAGE CONDITIONS	Store in sealed containers in dry conditions, protected from extremes of temperature
SHELF LIFE	9 months in unopened manufacturer's packaging
APPLICATION INFORMATION	
MIX PROPORTIONS	Mix 20 kg powder with 5L water
POTLIFE	Approx. 5 hours @ 20°C
APPLICATION TEMPERATURE	+5°C to +30°C
OPEN TIME	30 – 40 minutes@ 20°C
BED THICKNESS	3- 6mm (up to 12mm in small isolated areas)
SETTING TIME	2-3 Hrs
COVERAGE	6 – 7m ² /20kg bag @3mm bed
PERFORMANCE INFORMATION*	
TENSILE ADHESION STRENGTH	≥1 MPa under all test conditions
OPEN TIME	≥30 minutes
SLIP	<0.5mm
TRANSVERSE DEFORMATION	≥2.5mm <5mm
CLASSIFICATION	Type C2 T E S1

*Typical Results to BS EN 12004

HANDLING PRECAUTION Adhesive products are generally safe provided they are used as instructed and that certain precautions normally taken when handling chemicals are observed e.g., do not allow any material to come into contact with foodstuffs. Avoid contact with skin. Do not swallow. Always read the safety information on the pack and the Safety Data Sheet before use.

IMPORTANT NOTE The information given in this data sheet is based on both current development work and many years' field experience. Whilst every effort is made to ensure that the information is reliable we cannot accept responsibility for any work carried out with our materials where we have no control over methods of application, site conditions etc.

For further information consult our Technical Department
 TEL: 028 40622444 Online: www.trenao.com
 TDS: TIER Flexible Adhesive

